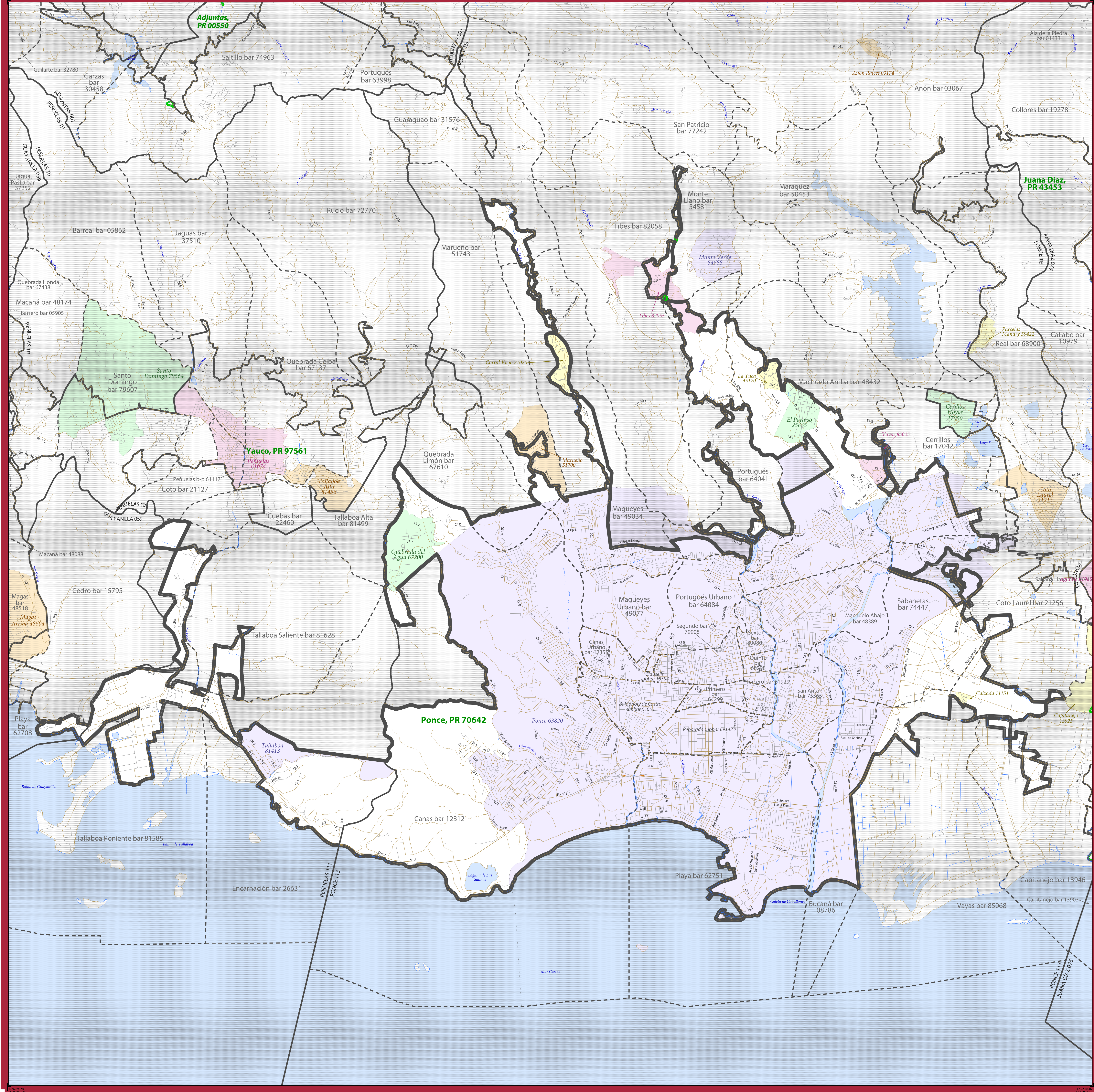


2010 CENSUS - URBANIZED AREA REFERENCE MAP: Ponce, PR



SYMBOL DESCRIPTION		LEGEND	
International/Puerto Rico	--- --	PUERTO RICO 72	
Urbanized Area	█	Ponce, PR 70642	
Urban Cluster	█	Coamo, PR 18316	
Municipio	---	ARECIBO 013	
Barrio or Barrio-Pueblo	- - - -	Palmas bar 58451	
Subbarrio	· · · · ·	Mercado subbar 53025	
Comunidad or Zona Urbana ¹	█	Yauco 88035	
Primary Road	— P-01	Water Body	█
Other Road	— A-01 Las Caobas	Military	█ Ft. Allen
Railroad	— C-01 Pinar	Outside Subject Area	█
Perennial Stream	— Q-01 Arriba		
Intermittent Stream	— Q-02 Abajo		

Where Puerto Rico, municipio, and/or barrio or barrio-pueblo boundaries coincide, the map shows the boundary symbol for only the highest-ranking of these boundaries.

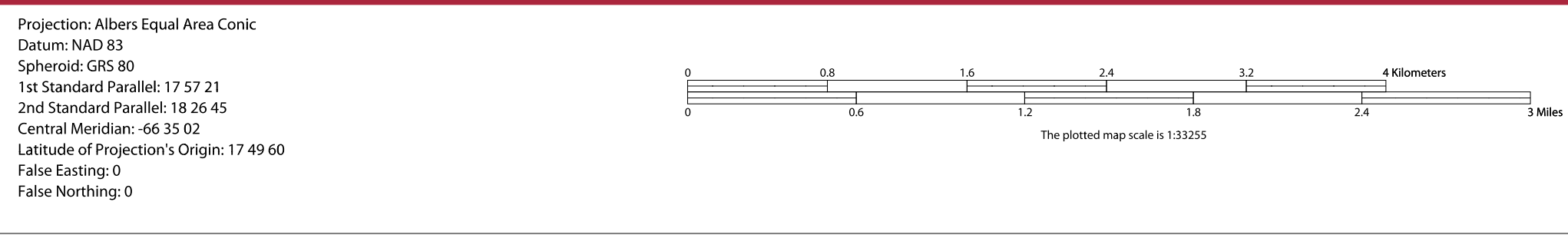
¹ Place label color corresponds to the place fill color.
Label colors: Yauco Yauco Yauco Yauco Yauco

SUBJECT AREA MUNICIPIOS ON MAP SHEET
 72059 Guayanilla
 72111 Penuelas
 72113 Ponce

All legal boundaries and names are as of January 1, 2010. Urban areas are based on results from the 2010 Decennial Census. The boundaries shown on this map are for Census Bureau statistical data collection and tabulation purposes only; their depiction and designation for statistical purposes does not constitute a determination of jurisdictional authority or rights of ownership or entitlement.

Geographic Vintage: 2010 Census (reference date: January 1, 2010)
 Data Source: U.S. Census Bureau's MAI/TIGER database (TAB10)
 Map Created by Geography Division: March 26, 2012

U.S. DEPARTMENT OF COMMERCE Economics and Statistics Administration U.S. Census Bureau



PARENT SHEET 1
 Total Sheets: 1
 Index Sheets: 0
 Parent Sheets: 1

UJA NAME: Ponce, PR
 UJA CODE: 70642
 ENTITY TYPE: Urbanized Area (UA)
 ST: Puerto Rico (72)

2010 CENSUS UJA REF MAP (PARENT)
 2110042001